



European IP Helpdesk

Stay ahead of the innovation game.

European IP Helpdesk services

04.06.2024



European IP Helpdesk

- Service initiative of the European Commission
- Addressing **current and potential beneficiaries of EU-funded projects, researchers and EU SMEs**
- Free-of-charge first-line support on intellectual property (IP)
- Hands-on IP and innovation management support
- International pool of IP experts from various thematic fields
- Unique cooperation scheme with the Enterprise Europe Network: 43 ambassadors from 26 EU countries



ec.europa.eu/ip-helpdesk





The EC IP Helpdesks



EC IP (SME) Helpdesk Hub – Gateway to Information



- E-learning modules & more
- Guides / Topic, country, sector-specific factsheets / Infographics
- Case studies



Code of Practice's Subgroups and EUIPH webinars

Intellectual Assets Management

- IP Management in EU funded Projects
- IP Management in ICT

IP and new technologies

- IP for Future and Emerging Technologies
- Patent Protection for EU funding in collaboration with EPO

Joint Industry and Academia

- IP management in MSCA Projects
- FTO



Code of Practice's Subgroups and EUIPH webinars

IP and Open Science and Open Innovation

- IP and Open Science
- IP Management in Collaborative environments

IP in International Cooperation

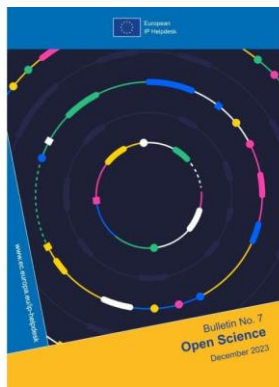
- IP in business collaboration for SMEs and Start Ups
- Thinking International: International Business Opportunities for SMEs

IP Valuation

- IP Assessment
- IP valorisation with Particular focus on EU13



Bulletin N.7 IP and Open Science



Infographic: Different Concepts of openness in HEU

Different Concepts of "Openness" in Horizon Europe

In Horizon Europe, the term "Open Science" is used to describe a range of practices and activities that aim to make research and knowledge more accessible and reusable. This includes Open Access, Open Peer Review, Open Data, Open Source, Open Educational Resources, and Open Science Prizes.

The infographic highlights key concepts of openness in the EU's current Framework Programme for Research and Innovation, Horizon Europe, and the role of openness, intellectual property protection, and commercialisation in the context of Horizon Europe.

OPEN SCIENCE	OPEN ACCESS
<ul style="list-style-type: none"> 1. Make research results freely available to all researchers and the public. 2. Publish research Open Access in peer-reviewed journals. 3. Publish research results in Open Access repositories. 4. Publish research results in Open Access repositories. 	<ul style="list-style-type: none"> 1. Make research results freely available to all researchers and the public. 2. Publish research results in Open Access repositories. 3. Publish research results in Open Access repositories. 4. Publish research results in Open Access repositories.

PROTECTED



Infographic: Impact Licensing

Impact Licensing: Enhancing Licensing Practices to Bolster Societal Value Creation

The strategies we use are essential – from climate change to energy strategies or impact access to medicine. To address these in a global scale, novel approaches are needed to increase the potential of intellectual assets and technologies to fully prosper.

Impact licensing is an innovative licensing practice aimed at enhancing the social value of intellectual assets for the benefit of society. It is a beneficial strategy instrument to bring technologies into societal markets in a sustainable and sustainable way. While different national impact licensing models exist, the infographic explains key features and components of the approach developed by the non-profit **Impact Licensing Institute (ILI)**.

What are Impact Licensing models?

Impact licensing can be defined as a strategic tool for measuring the societal value creation potential of technologies and data without being subject to economic impact and the goal of generating a return on investment. It is the voluntary granting of a beneficial license to a technology holder by a technology holder to a licensee (individual or legal entity), including all the intellectual assets in a particular market for a specific social purpose.

Impact licensing can be used for licensing any sort of intellectual property, such as patented technologies, trade secrets (methods, processes, datasets...), trademarks, copyrights, or top data.

What's the difference?

<p>Traditional Licensing</p> <p>Traditional licensing is based on market value (defined by geographic, sector and technology).</p>	vs.	<p>Impact Licensing</p> <p>Impact licensing is based on the societal value of the technology to generate a societal benefit that goes beyond an individual's Development Goals.</p>
---	-----	--

Why should technology owners consider an impact license?

The return for the technology holder is a social return, not a financial return. There are three major reasons for a technology holder to engage in an impact license:

1. Exclusive access to the technology made via the social use of the technology.
2. Exclusive access to the technical data that is generated and harvested during the social use of the impact license.
3. Recognition for the social ability to create a contribution to the achievement of the UN 2023 goals.

Fact Sheet: Intellectual Property Valuation

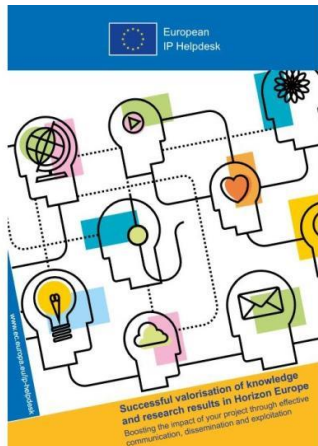
FACT SHEET

Intellectual Property Valuation

www.ec.europa.eu/ip-helpdesk



IP guide: Successful Valorisation of Knowledge and Research Results in Horizon Europe



Fact Sheet: Commercialising Intellectual Property: Assignment Agreements



Ambassador Scheme

- **Cooperation scheme** with the Enterprise Europe Network (EEN): 43 ambassadors – 26 countries
- **Building IP capacities** among European SMEs
- **Overcoming language barriers**
- Making the topic **more accessible**
- Exchange and feedback from ambassadors on **needs of SMEs**
- Local **awareness** and **training events**





Thank you!

- www.ec.europa.eu/ip-helpdesk
- helpline@iprhelpdesk.eu
- training@iprhelpdesk.eu
- Twitter [@iprhelpdesk](https://twitter.com/iprhelpdesk)
- LinkedIn [/european-ipr-helpdesk](https://www.linkedin.com/company/european-ipr-helpdesk)

